

Rampion 2 Wind Farm

Category 6:

Environmental Statement

Volume 3, Chapter 15: Seascape, landscape and visual impact assessment (Part 2 of 8)

Date: August 2023

Revision A

Document Reference: 6.3.15

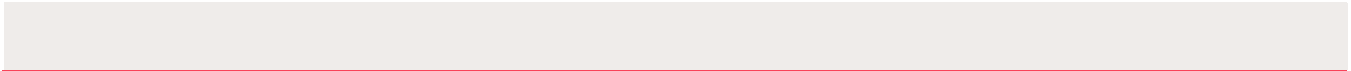
Pursuant to: APFP Regulation 5 (2) (a)

Ecodoc number: 004884762-01



Document revisions

Revision	Date	Status/reason for issue	Author	Checked by	Approved by
A	04/08/2023	Final for DCO Application	WSP	RED	RED



Contents

List of Figures

Figure number	Figure Title	APFP number	Ecodoc number	Revision	Revision Date	Document Part
Figure 15.1	SLVIA project design envelope	5 (2) (a)	004866164-01	A	04/08/2023	Part 1 of 8
Figure 15.2	Wind farm array area design evolution	5 (2) (a)	004866165-01	A	04/08/2023	Part 1 of 8
Figure 15.3	Site location and SLVIA Study Area	5 (2) (a)	004866167-01	A	04/08/2023	Part 1 of 8
Figure 15.4	Seascape character	5 (2) (a)	004866170-01	A	04/08/2023	Part 1 of 8
Figure 15.5	Landscape character (National)	5 (2) (a)	004866171-01	A	04/08/2023	Part 1 of 8
Figure 15.6a	Landscape character (County)	5 (2) (a)	004866172-01	A	04/08/2023	Part 1 of 8
Figure 15.6b	Landscape character (County) - legend	5 (2) (a)	004866173-01	A	04/08/2023	Part 1 of 8
Figure 15.7	Landscape designations	5 (2) (a)	004866174-01	A	04/08/2023	Part 1 of 8
Figure 15.8	Landform	5 (2) (a)	004866175-01	A	04/08/2023	Part 1 of 8
Figure 15.9	Visual receptors	5 (2) (a)	004866176-01	A	04/08/2023	Part 1 of 8
Figure 15.10	Viewpoints	5 (2) (a)	004866177-01	A	04/08/2023	Part 1 of 8

Figure number	Figure Title	APFP number	Ecodoc number	Revision	Revision Date	Document Part
Figure 15.11	Baseline lighting - South Downs National Park	5 (2) (a)	004866178-01	A	04/08/2023	Part 1 of 8
Figure 15.12	South Downs Dark Sky Reserve	5 (2) (a)	004866179-01	A	04/08/2023	Part 1 of 8
Figure 15.13	Comparative blade tip ZTV (325m blade tip) – 50km ES and PEIR Layout	5 (2) (a)	004866180-01	A	04/08/2023	Part 1 of 8
Figure 15.14a	Blade tip ZTV (325m blade tip) – 50km study area (A3)	5 (2) (a)	004866181-01	A	04/08/2023	Part 1 of 8
Figure 15.14b	Blade tip ZTV (325m blade tip) – 50km study area (A1)	5 (2) (a)	004866182-01	A	04/08/2023	Part 1 of 8
Figure 15.15	Blade tip ZTV with surface feature screening – 50 km study area (A1)	5 (2) (a)	004866184-01	A	04/08/2023	Part 1 of 8
Figure 15.16	Hub height ZTV (177.5m hub height) – 50km study area (A3)	5 (2) (a)	004866186-01	A	04/08/2023	Part 1 of 8
Figure 15.17	Horizontal angle ZTV	5 (2) (a)	004866188-01	A	04/08/2023	Part 2 of 8
Figure 15.18	Blade tip ZTV with seascape character	5 (2) (a)	004866189-01	A	04/08/2023	Part 2 of 8

Figure number	Figure Title	APFP number	Ecodoc number	Revision	Revision Date	Document Part
Figure 15.19a-d	Blade tip ZTV landscape character	5 (2) (a)	004866191-01	A	04/08/2023	Part 2 of 8
Figure 15.20a-d	Blade tip ZTV with landscape designations	5 (2) (a)	004866192-01	A	04/08/2023	Part 2 of 8
Figure 15.21a-d	Blade tip ZTV with visual receptors	5 (2) (a)	004866193-01	A	04/08/2023	Part 3 of 8
Figure 15.22	Cumulative ZTV with Rampion 1	5 (2) (a)	004866194-01	A	04/08/2023	Part 3 of 8
Figure 15.23	Blade tip ZTV with visibility range	5 (2) (a)	004866195-01	A	04/08/2023	Part 3 of 8
Figure 15.24a-d	Blade tip ZTV with National Trails	5 (2) (a)	004866196-01	A	04/08/2023	Part 3 of 8
Figure 15.25	Nacelle aviation lighting ZTV South Downs National Park	5 (2) (a)	004866197-01	A	04/08/2023	Part 4 of 8
Figure 15.26a-f	Viewpoint 1 Beachy Head	5 (2) (a)	004866198-01	A	04/08/2023	Part 4 of 8
Figure 15.27a-h	Viewpoint 2 Birling Gap	5 (2) (a)	004866199-01	A	04/08/2023	Part 4 of 8
Figure 15.28a-f	Viewpoint 3 Seven Sisters Country Park	5 (2) (a)	004866200-01	A	04/08/2023	Part 4 of 8
Figure 15.29a-f	Viewpoint 4 Seaford Head	5 (2) (a)	004866201-01	A	04/08/2023	Part 4 of 8
Figure 15.30a-f	Viewpoint 5 Newhaven (Castle Hill)	5 (2) (a)	004866202-01	A	04/08/2023	Part 4 of 8

Figure number	Figure Title	APFP number	Ecodoc number	Revision	Revision Date	Document Part
Figure 15.31a-f	Viewpoint 6 Peacehaven	5 (2) (a)	004866203-01	A	04/08/2023	Part 4 of 8
Figure 15.32a-f	Viewpoint 7 Beacon Hill, Rottingdean	5 (2) (a)	004866204-01	A	04/08/2023	Part 4 of 8
Figure 15.33a-j	Viewpoint 8 Brighton seafront promenade	5 (2) (a)	004866205-01	A	04/08/2023	Part 4 of 8
Figure 15.34a-i	Viewpoint 9 Shoreham/A2 59 coastal road	5 (2) (a)	004866206-01	A	04/08/2023	Part 5 of 8
Figure 15.35a-i	Viewpoint 10 Worthing seafront promenade	5 (2) (a)	004866207-01	A	04/08/2023	Part 5 of 8
Figure 15.36a-i	Viewpoint 11 Littlehampton seafront promenade	5 (2) (a)	004866208-01	A	04/08/2023	Part 5 of 8
Figure 15.37a-i	Viewpoint 12 Bognor Regis seafront promenade	5 (2) (a)	004866209-01	A	04/08/2023	Part 5 of 8
Figure 15.38a-i	Viewpoint 13 Pagham Beach	5 (2) (a)	004866210-01	A	04/08/2023	Part 5 of 8
Figure 15.39a-f	Viewpoint 14 Selsey seafront promenade	5 (2) (a)	004866211-01	A	04/08/2023	Part 5 of 8
Figure 15.40a-b	Viewpoint 15 Willingdon Hill	5 (2) (a)	004866212-01	A	04/08/2023	Part 5 of 8
Figure 15.41a-f	6.3.15.41 Rampion 2 ES Volume 3	5 (2) (a)	004866213-01	A	04/08/2023	Part 5 of 8

Figure number	Figure Title	APFP number	Ecodoc number	Revision	Revision Date	Document Part
	Figure 15.41 Viewpoint 16 Firle Beacon					
Figure 15.42a-m	Viewpoint 17 Devil's Dyke	5 (2) (a)	004866214 -01	A	04/08/2023	Part 5 of 8
Figure 15.43a-h	Viewpoint 18 Cissbury Ring	5 (2) (a)	004866215 -01	A	04/08/2023	Part 6 of 8
Figure 15.44a-i	Viewpoint 19 Highdown Hill	5 (2) (a)	004866216 -01	A	04/08/2023	Part 6 of 8
Figure 15.45a-b	Viewpoint 20 Springhead Hill	5 (2) (a)	004866217 -01	A	04/08/2023	Part 6 of 8
Figure 15.46a-h	Viewpoint 21 Bignor Hill	5 (2) (a)	004866218 -01	A	04/08/2023	Part 6 of 8
Figure 15.47a-f	Viewpoint 22 Eastoke Point (Chichester Harbour AONB)	5 (2) (a)	004866219 -01	A	04/08/2023	Part 6 of 8
Figure 15.48a-f	Viewpoint 24 Bembridge, Isle of Wight	5 (2) (a)	004866220 -01	A	04/08/2023	Part 6 of 8
Figure 15.49a-b	Viewpoint 26 Low Weald (A24, near Ashington)	5 (2) (a)	004866221 -01	A	04/08/2023	Part 6 of 8
Figure 15.50a-h	Viewpoint 27 Hollingbury Golf Course/Hill Fort	5 (2) (a)	004866222 -01	A	04/08/2023	Part 6 of 8
Figure 15.51a-f	Viewpoint 28 Cuckmere Haven Beach	5 (2) (a)	004866223 -01	A	04/08/2023	Part 6 of 8
Figure 15.52a-b	Viewpoint 29 Kingley Vale National	5 (2) (a)	004866224 -01	A	04/08/2023	Part 6 of 8

Figure number	Figure Title	APFP number	Ecodoc number	Revision	Revision Date	Document Part
	Nature Reserve					
Figure 15.53a-b	Viewpoint 30 Halnaker Windmill	5 (2) (a)	004866225 -01	A	04/08/2023	Part 6 of 8
Figure 15.54a-g	Viewpoint 31 Butser Hill National Nature Reserve	5 (2) (a)	004866226 -01	A	04/08/2023	Part 6 of 8
Figure 15.55a-b	Viewpoint 32 Levin Down	5 (2) (a)	004866227 -01	A	04/08/2023	Part 7 of 8
Figure 15.56a-e	Viewpoint 33 Arundel Castle	5 (2) (a)	004866228 -01	A	04/08/2023	Part 7 of 8
Figure 15.57a-f	Viewpoint 34 Bembridge Fort	5 (2) (a)	004866229 -01	A	04/08/2023	Part 7 of 8
Figure 15.58a-f	Viewpoint 35 St. Boniface Down above Ventnor	5 (2) (a)	004866230 -01	A	04/08/2023	Part 7 of 8
Figure 15.59a-h	Viewpoint 40 Climping Beach	5 (2) (a)	004866231 -01	A	04/08/2023	Part 7 of 8
Figure 15.60a-b	Viewpoint 41 Slindon Folly	5 (2) (a)	004866232 -01	A	04/08/2023	Part 7 of 8
Figure 15.61a-c	Viewpoint 43 Gilkicker Point	5 (2) (a)	004866233 -01	A	04/08/2023	Part 7 of 8
Figure 15.62a-b	Viewpoint 47 High Weald (near Bolney)	5 (2) (a)	004866234 -01	A	04/08/2023	Part 7 of 8
Figure 15.63a-f	Viewpoint 50 The Trundle	5 (2) (a)	004866235 -01	A	04/08/2023	Part 7 of 8

Figure number	Figure Title	APFP number	Ecodoc number	Revision	Revision Date	Document Part
Figure 15.64a-b	Viewpoint 51 Ditchling Beacon	5 (2) (a)	004866236 -01	A	04/08/2023	Part 7 of 8
Figure 15.65a-h	Viewpoint 52 Chanctonbury Ring	5 (2) (a)	004866237 -01	A	04/08/2023	Part 7 of 8
Figure 15.66a-b	Viewpoint 53 Amberley Mount	5 (2) (a)	004866238 -01	A	04/08/2023	Part 7 of 8
Figure 15.67a-b	Viewpoint 54 Chantry Hill	5 (2) (a)	004866239 -01	A	04/08/2023	Part 7 of 8
Figure 15.68a-b	Viewpoint 55 Beeding Hill	5 (2) (a)	004866240 -01	A	04/08/2023	Part 7 of 8
Figure 15.69a-e	Viewpoint 57 Telscomb Tye	5 (2) (a)	004866241 -01	A	04/08/2023	Part 8 of 8
Figure 15.70a-b	Viewpoint 58 Wolstonbury Hill	5 (2) (a)	004866242 -01	A	04/08/2023	Part 8 of 8
Figure 15.71a-b	Viewpoint 61 A27 near Lancing College	5 (2) (a)	004866243 -01	A	04/08/2023	Part 8 of 8
Figure 15.72a-b	Viewpoint 62 Beacon Hill, South Downs Way	5 (2) (a)	004866244 -01	A	04/08/2023	Part 8 of 8
Figure 15.73a-e	Viewpoint A East Wittering	5 (2) (a)	004866245 -01	A	04/08/2023	Part 8 of 8
Figure 15.74a-b	Viewpoint B1 Chichester Marina	5 (2) (a)	004866246 -01	A	04/08/2023	Part 8 of 8
Figure 15.75a-b	Viewpoint B2 Dell Quay	5 (2) (a)	004866247 -01	A	04/08/2023	Part 8 of 8
Figure 15.76a-b	Viewpoint C Eastergate	5 (2) (a)	004866248 -01	A	04/08/2023	Part 8 of 8

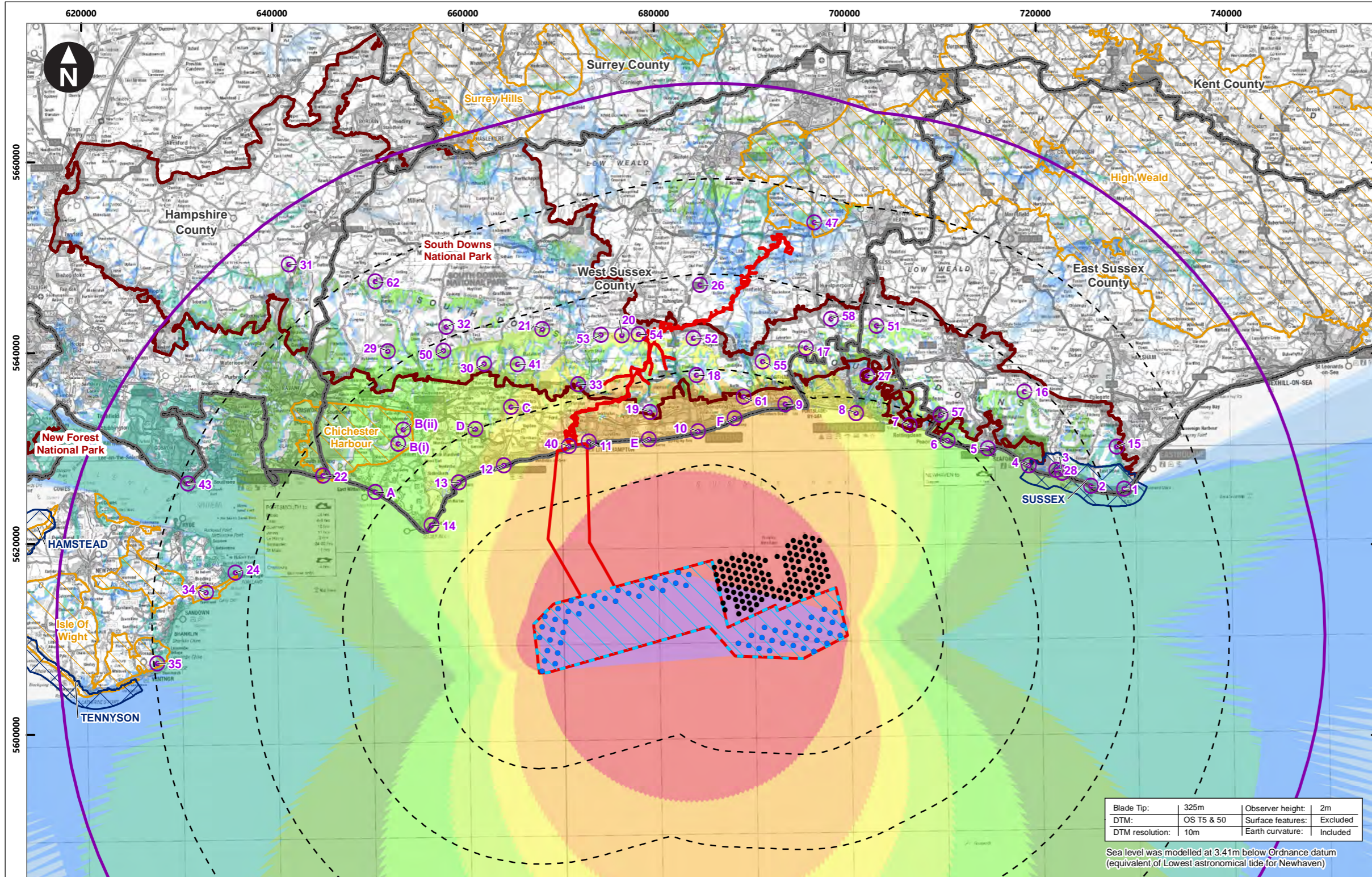
Figure number	Figure Title	APFP number	Ecodoc number	Revision	Revision Date	Document Part
	(proposed A29)					
Figure 15.77a-b	Viewpoint D Footpath between A259 and Colworth	5 (2) (a)	004866249-01	A	04/08/2023	Part 8 of 8
Figure 15.78a-i	Viewpoint E Ferring Gap	5 (2) (a)	004866250-01	A	04/08/2023	Part 8 of 8
Figure 15.79a-h	Viewpoint F Lancing Beach	5 (2) (a)	004866251-01	A	04/08/2023	Part 8 of 8
Figure 15.80	Single frame montage Viewpoint 1 Beachy Head	5 (2) (a)	004866252-01	A	04/08/2023	Part 8 of 8
Figure 15.81	Single frame montage Viewpoint 2 Birling Gap	5 (2) (a)	004866253-01	A	04/08/2023	Part 8 of 8
Figure 15.82	Single frame montage Viewpoint 7 Beacon Hill, Rottingdean	5 (2) (a)	004866254-01	A	04/08/2023	Part 8 of 8
Figure 15.83	Single frame montage Viewpoint 18 Cissbury Ring	5 (2) (a)	004866255-01	A	04/08/2023	Part 8 of 8
Figure 15.84	Single frame montage Viewpoint 19 Highdown Hill	5 (2) (a)	004866256-01	A	04/08/2023	Part 8 of 8
Figure 15.85	Single frame montage Viewpoint 22 Eastoke Point (Chichester	5 (2) (a)	004866257-01	A	04/08/2023	Part 8 of 8

Figure number	Figure Title	APFP number	Ecodoc number	Revision	Revision Date	Document Part
	Harbour AONB)					
Figure 15.86	Single frame montage Viewpoint 27 Hollingbury Golf Course/Hill Fort	5 (2) (a)	004866258 -01	A	04/08/2023	Part 8 of 8
Figure 15.87	Single frame montage Viewpoint 28 Cuckmere Haven Beach	5 (2) (a)	004866259 -01	A	04/08/2023	Part 8 of 8
Figure 15.88	Single frame montage Viewpoint 33 Arundel Castle	5 (2) (a)	004866260 -01	A	04/08/2023	Part 8 of 8
Figure 15.89	Single frame montage Viewpoint 34 Bembridge Fort	5 (2) (a)	004866261 -01	A	04/08/2023	Part 8 of 8
Figure 15.90	Single frame montage Viewpoint 50 the Trundle	5 (2) (a)	004866262 -01	A	04/08/2023	Part 8 of 8
Figure 15.91	Single frame montage Viewpoint 52 Chanctonbury Ring	5 (2) (a)	004866263 -01	A	04/08/2023	Part 8 of 8
Figure 15.92	Single frame montage Viewpoint 57 Telscomb Tye	5 (2) (a)	004866264 -01	A	04/08/2023	Part 8 of 8
Figure 15.93	Comparative wireline	5 (2) (a)	004866265 -01	A	04/08/2023	Part 8 of 8

Figure number	Figure Title	APFP number	Ecodoc number	Revision	Revision Date	Document Part
	Viewpoint 1 Beachy Head					
Figure 15.94	Comparative wireline Viewpoint 2 Birling Gap	5 (2) (a)	004866266 -01	A	04/08/2023	Part 8 of 8
Figure 15.95	Comparative wireline Viewpoint 3 Seven Sisters	5 (2) (a)	004866267 -01	A	04/08/2023	Part 8 of 8
Figure 15.96	Comparative wireline Viewpoint 4 Seaford Head	5 (2) (a)	004866268 -01	A	04/08/2023	Part 8 of 8
Figure 15.97	Comparative wireline Viewpoint 7 Rottingdean	5 (2) (a)	004866269 -01	A	04/08/2023	Part 8 of 8
Figure 15.98	Comparative wireline Viewpoint 8 Brighton seafront promenade	5 (2) (a)	004866270 -01	A	04/08/2023	Part 8 of 8
Figure 15.99	Comparative wireline Viewpoint 10 Worthing	5 (2) (a)	004866271 -01	A	04/08/2023	Part 8 of 8
Figure 15.100	Comparative wireline Viewpoint 13 Pagham	5 (2) (a)	004866272 -01	A	04/08/2023	Part 8 of 8
Figure 15.101	Comparative wireline Viewpoint 17 Devil's Dyke	5 (2) (a)	004866273 -01	A	04/08/2023	Part 8 of 8
Figure 15.102	Comparative wireline Viewpoint 18	5 (2) (a)	004866274 -01	A	04/08/2023	Part 8 of 8

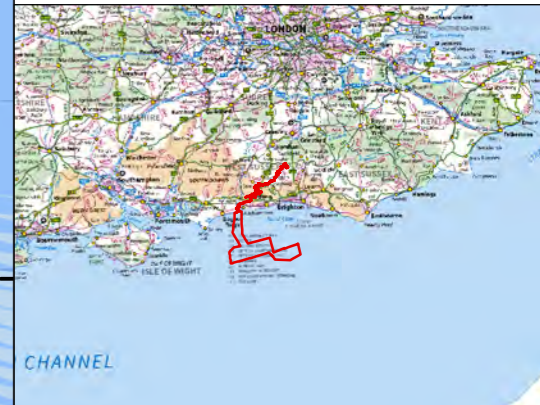
Figure number	Figure Title	APFP number	Ecodoc number	Revision	Revision Date	Document Part
	Cissbury Ring					
Figure 15.103	Comparative wireline Viewpoint 19 Highdown Hill	5 (2) (a)	004866275 -01	A	04/08/2023	Part 8 of 8
Figure 15.104	Comparative wireline Viewpoint 22 Eastoke Point (Chichester Harbour AONB)	5 (2) (a)	004866276 -01	A	04/08/2023	Part 8 of 8
Figure 15.105	Comparative wireline Viewpoint 27 Hollingbury Hill	5 (2) (a)	004866277 -01	A	04/08/2023	Part 8 of 8
Figure 15.106	Comparative wireline Viewpoint 28 Cuckmere Haven	5 (2) (a)	004866278 -01	A	04/08/2023	Part 8 of 8
Figure 15.107	Comparative wireline Viewpoint 34 Bembridge Fort	5 (2) (a)	004866281 -01	A	04/08/2023	Part 8 of 8
Figure 15.108	Comparative wireline Viewpoint 50 The Trundle	5 (2) (a)	004866282 -01	A	04/08/2023	Part 8 of 8
Figure 15.109	Comparative wireline Viewpoint 54 Chantry Hill	5 (2) (a)	004866283 -01	A	04/08/2023	Part 8 of 8

Page intentionally blank



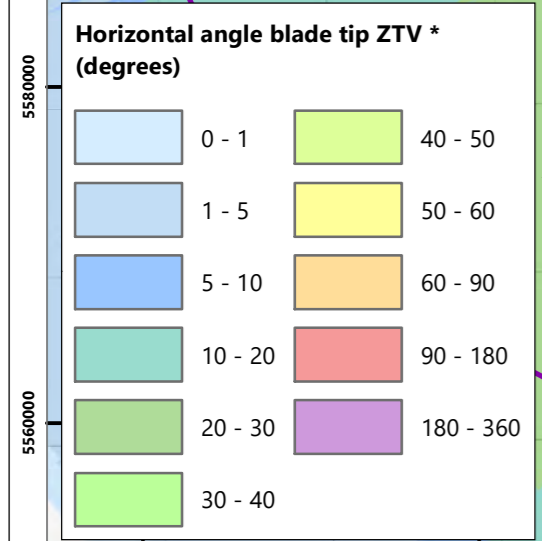
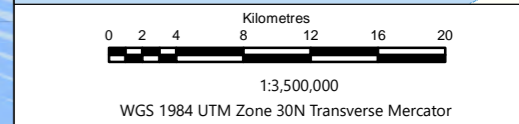
Key

- Proposed DCO Order Limits
- 50km Study Area
- Offshore Array Area
- 10km Radii
- Rampion 2 WTG
- Operational Rampion 1 WTG
- ⊙ Viewpoint
- County boundary
- Heritage coasts
- Area of Outstanding Natural Beauty
- National park



Blade Tip:	325m	Observer height:	2m
DTM:	OS T5 & 50	Surface features:	Excluded
DTM resolution:	10m	Earth curvature:	Included

Sea level was modelled at 3.41m below Ordnance datum (equivalent of Lowest astronomical tide for Newhaven)



Viewpoints

1 - Beachy Head	15 - Willingdon Hill	31 - Butser Hill National Nature Reserve	55 - Beeding Hill
2 - Birling Gap	16 - Firlie Beacon	32 - Levin Down	57 - Telscomb Tye
3 - Seven Sisters Country Park	17 - Devil's Dyke	33 - Arundel Castle	58 - Wolstonbury Hill
4 - Seaford Head	18 - Cissbury Ring	34 - Bembridge Fort	61 - A27 near Lancing College
5 - Newhaven (Castle Hill)	19 - Highdown Hill	35 - St. Boniface Down above Ventnor	62 - Beacon Hill, South Downs Way
6 - Peacehaven	20 - Springhead Hill	40 - Climping Beach	A - East Wittering
7 - Beacon Hill, Rottingdean	21 - Bignor Hill	41 - Slindon Folly	B(i) - Chichester Marina
8 - Brighton sea front promenade	22 - Eastoke Point (Chichester Harbour AONB)	43 - Gilkicker Point	B(ii) - Dell Quay
9 - Shoreham/A259 coastal road	24 - Bembridge, Isle of Wight	47 - High Weald (near Bolney)	C - Eastergate (proposed A29)
10 - Worthing sea front promenade	26 - Low Weald (A24, near Ashington)	50 - The Trundle	D - Footpath between A259 and Colworth
11 - Littlehampton sea front promenade	27 - Hollingbury Golf Course/Hill Fort	51 - Ditchling Beacon	E - Ferring Gap
12 - Bognor Regis sea front promenade	28 - Cuckmere Haven Beach	52 - Chanctonbury Ring	F - Lancing Beach
13 - Pagham Beach	29 - Kingley Vale National Nature Reserve	53 - Amberley Mount	
14 - Selsey sea front promenade	30 - Halnaker Windmill, north of Chichester	54 - Chantry Hill	

Rampion Extension Development

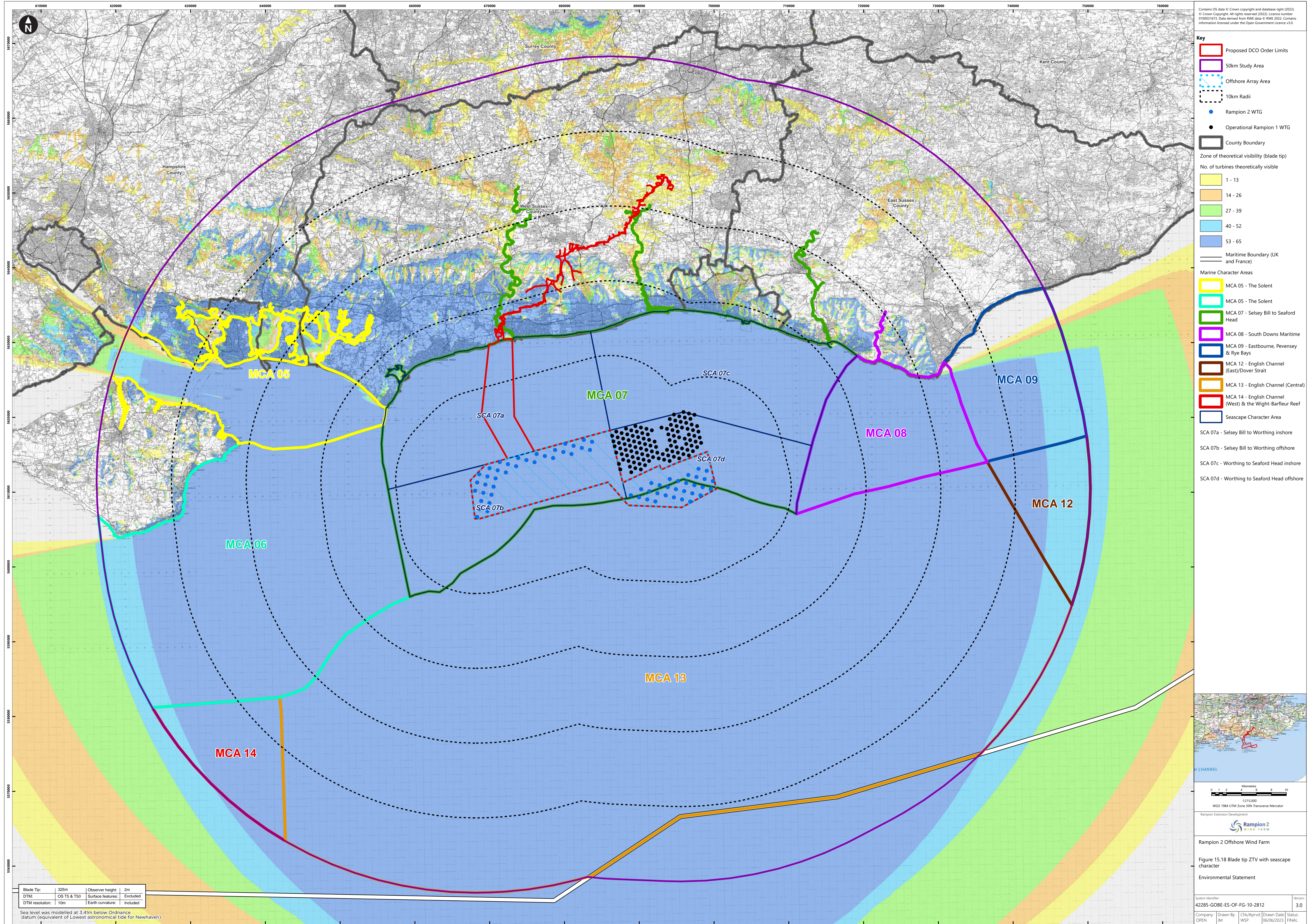
Rampion 2 Offshore Wind Farm

Figure 15.17 Horizontal angle ZTV

Environmental Statement

System Identifier: 42285-GOBE-ES-OF-FG-10-7815		Version: 3.0
Company: OPEN	Drawn By: JM	Chk/Prvd: WSP
Drawn Date: 06/06/2023	Status: FINAL	

* The horizontal angle ZTV measures how much of the horizontal field of view is occupied by the Development. It is calculated from grid of receptors in the study area and measures the maximum angle from the furthest left to the furthest right extent of the Development.

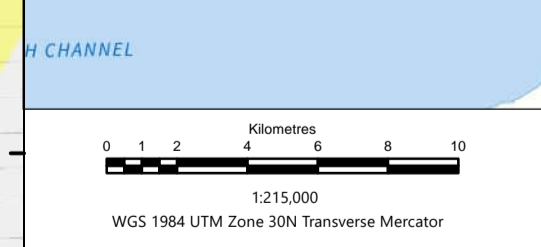
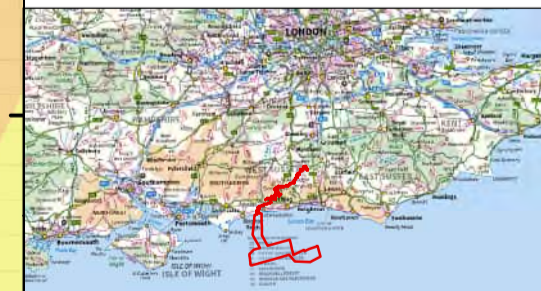


Contains OS data © Crown copyright and database right (2022).
 © Crown Copyright. All rights reserved (2022). Licence number: 010001673. Data derived from RWE data © RWE 2022. Contains information licensed under the Open Government Licence v3.0.

- Key**
- Proposed DCO Order Limits
 - 50km Study Area
 - Offshore Array Area
 - 10km Radii
 - Rampion 2 WTG
 - Operational Rampion 1 WTG
 - County Boundary
 - Maritime Boundary (UK and France)
 - Zone of theoretical visibility (blade tip)**
 - No. of turbines theoretically visible**
 - 1 - 13
 - 14 - 26
 - 27 - 39
 - 40 - 52
 - 53 - 65
 - Marine Character Areas
 - MCA 05 - The Solent
 - MCA 05 - The Solent
 - MCA 07 - Selsey Bill to Seaford Head
 - MCA 08 - South Downs Maritime
 - MCA 09 - Eastbourne, Pevensey & Rye Bays
 - MCA 12 - English Channel (East/Dover Strait)
 - MCA 13 - English Channel (Central)
 - MCA 14 - English Channel (West) & the Wight-Barleur Reef
 - Seascape Character Area
 - SCA 07a - Selsey Bill to Worthing inshore
 - SCA 07b - Selsey Bill to Worthing offshore
 - SCA 07c - Worthing to Seaford Head inshore
 - SCA 07d - Worthing to Seaford Head offshore

Blade Tip: 325m
 DTM: OS T5 & T50
 DTM resolution: 10m
 Observer height: 2m
 Surface features: Excluded
 Earth curvature: Included

Sea level was modelled at 3.41m below Ordnance datum (equivalent of Lowest astronomical tide for Newhaven)



Rampion Extension Development

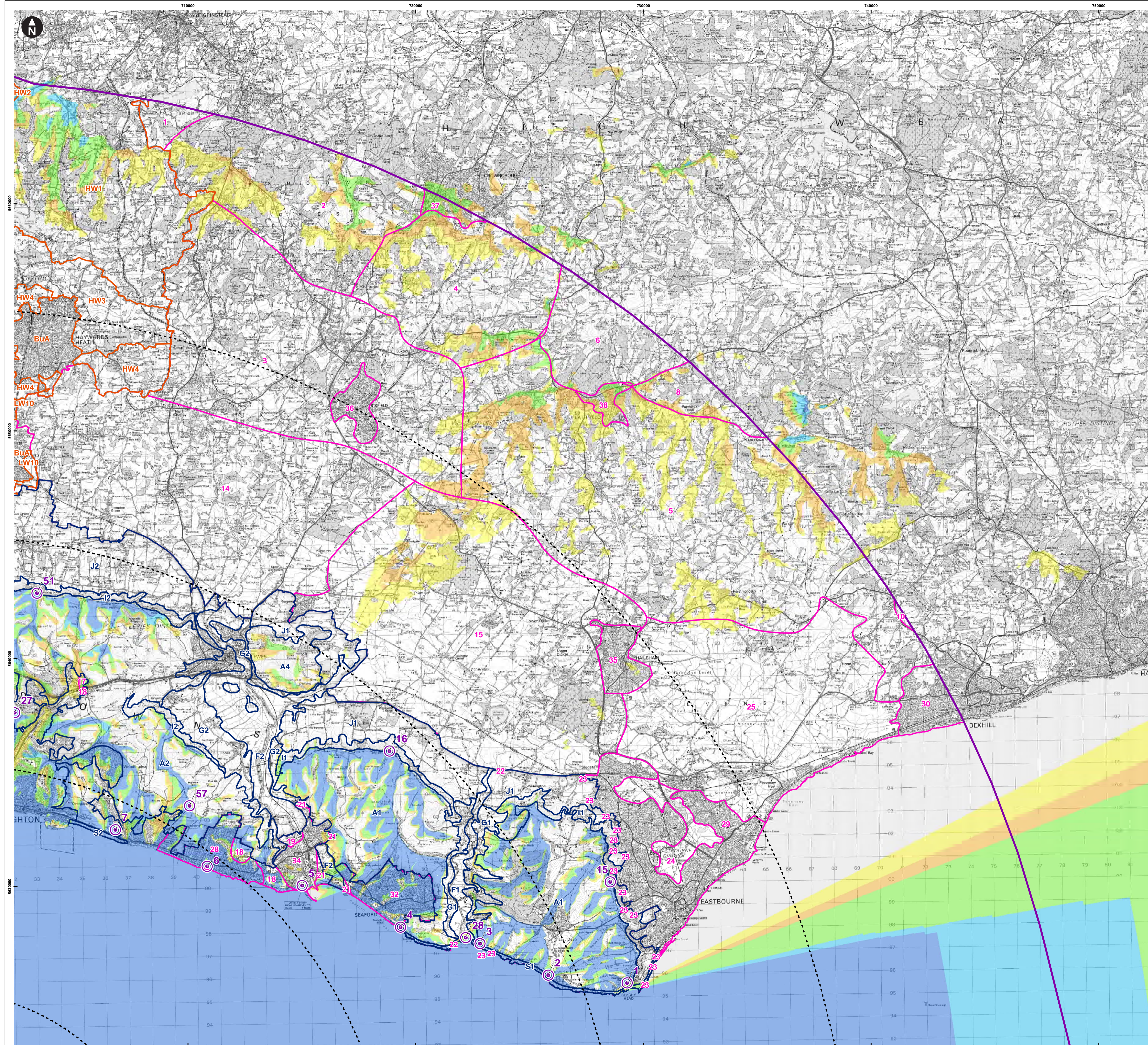
Rampion 2 Offshore Wind Farm

Figure 15.18 Blade tip ZTV with seascape character

Environmental Statement

System Identifier:	42285-GOBE-ES-OF-FG-10-2812	Version:	3.0
Company:	OPEN	Drawn By:	WSP
Chk/Aprvd:	Chk/Aprvd	Drawn Date:	06/06/2023
Status:	FINAL		

Document uncontrolled when printed ISO A1 Landscape



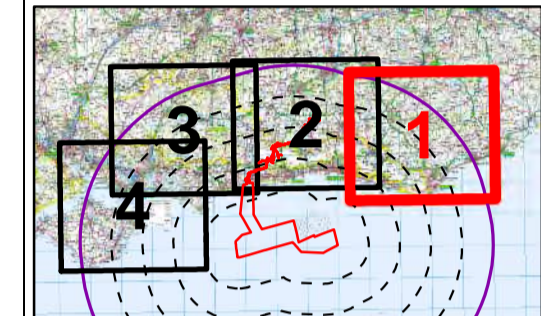
- SDNPA landscape character**
 Source: South Downs National Park Integrated Landscape Character Assessment (2020)
- A1. Ouse to Eastbourne Open Downs
 - A2. Adur to Ouse Open Downs
 - A4. Mount Caburn
 - F1. Cuckmere Floodplain
 - F2. Ouse Floodplain
 - G1. Cuckmere Valley Sides
 - G2. Ouse Valley Sides
 - I1. Ouse to Eastbourne Downs Scarp
 - I2. Adur to Ouse Downs Scarp
 - J1. Ouse to Eastbourne Scarp Footslopes
 - J2. Adur to Ouse Scarp Footslopes
 - S1. Seaford to Beachy Head Shoreline
 - S2. Brighton to Rottingdean
- East Sussex landscape character**
 Source: East Sussex Landscape Character Assessment (2016)
- 1. Upper Medway
 - 2. Ashdown Forest
 - 3. Upper Ouse Valley
 - 4. Central High Weald
 - 5. South Slopes of High Weald
 - 6. Upper Rother Valley
 - 8. Dudwell Valley
 - 10. Coombe Haven Valley
 - 14. Western Low Weald
 - 15. Eastern Low Weald
 - 17. Ditchling - Mount Harry Downs
 - 18. Falmer - Telscombe Downs
 - 19. Lower Ouse Valley
 - 21. Firle Bishopstone Downs
 - 22. Lower Cuckmere Valley
 - 23. Wilmington Heritage Downs
 - 24. Eastbourne Levels
 - 25. Pevensey Levels
 - 28. Saltdean - Peacehaven
 - 29. Eastbourne
 - 30. Bexhill
 - 32. Seaford
 - 34. Newhaven
 - 35. Hailsham
 - 36. Uckfield
 - 37. Crowborough
 - 38. Heathfield
- West Sussex landscape character**
 Source: Landscape Character Assessment of West Sussex (2003)
- BuA. Build up Area
 - HW1. High Weald
 - HW2. High Weald Forests
 - HW3. Ouse Valley
 - HW4. High Weald Fringes
 - LW10. Eastern Low Weald

Contains OS data © Crown copyright and database right (2022).
 © Crown Copyright. All rights reserved (2022). Licence number 0100031673. Data derived from RWE data © RWE 2022. Contains information licensed under the Open Government Licence v3.0.

- Key**
- Proposed DCO Order Limits
 - 50km Study Area
 - 10km Radii
 - Viewpoint

Zone of theoretical visibility (blade tip)
 No. of turbines theoretically visible

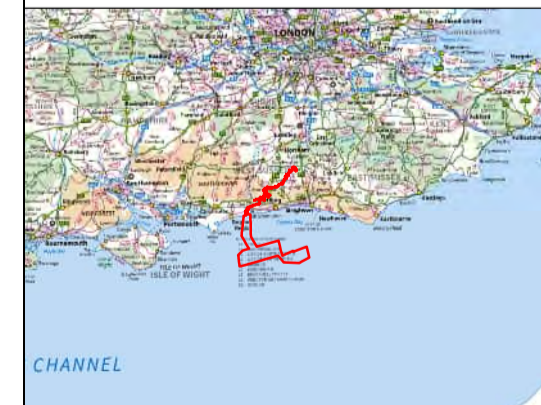
- 1 - 13
- 14 - 26
- 27 - 39
- 40 - 52
- 53 - 65
- East Sussex landscape character
- West Sussex landscape character
- SDNPA landscape character



- Viewpoints**
- 1 - Beachy Head
 - 2 - Birling Gap
 - 3 - Seven Sisters Country Park
 - 4 - Seaford Head
 - 5 - Newhaven (Castle Hill)
 - 6 - Peacehaven
 - 7 - Beacon Hill, Rottingdean
 - 15 - Willingdon Hill
 - 16 - Firle Beacon
 - 27 - Hollingbury Golf Course/Hill Fort
 - 28 - Cuckmere Haven Beach
 - 51 - Ditchling Beacon
 - 57 - Telscomb Tye

Blade Tip:	325m	Observer height:	2m
DTM:	OS T5 & T50	Surface features:	Excluded
DTM resolution:	10m	Earth curvature:	Included

Sea level was modelled at 3.41m below Ordnance datum (equivalent of Lowest astronomical tide for Newhaven)

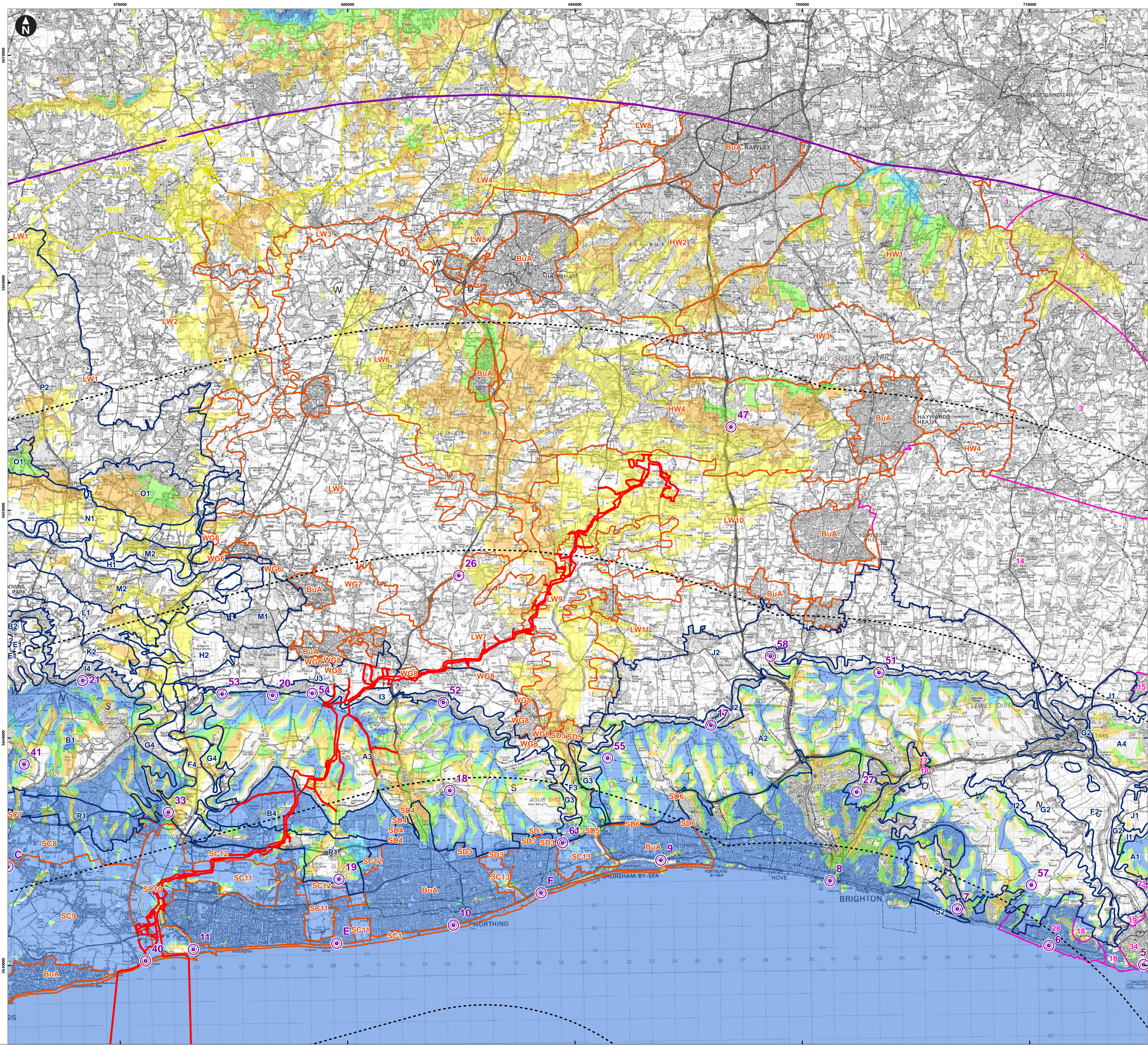


Scale: 1:180,000
 WGS 1984 UTM Zone 30N Transverse Mercator

Rampton Extension Development
Rampton 2 WIND FARM

Rampton 2 Offshore Wind Farm
 Figure 15.19a Blade tip ZTV with landscape character - Map 1 (East)
 Environmental Statement

System Identifier:	42285-GOBE-ES-OF-FG-10-3792	Version:	3.0
Company:	OPEN	Drawn By:	JM
Chk/Aprvd:	WSP	Drawn Date:	06/06/2023
Status:	FINAL		



SDNPA landscape character

Source: South Downs National Park Integrated Landscape Character Assessment (2010)

- A1. Ouse to Eastbourne Downs
- A2. Adur to Ouse Downs
- A3. Arun to Adur Downs
- A4. Mount Caburn
- B1. Goodwood to Arundel Wooded Estate Downland
- B2. Queen Elizabeth Forest to East Dean Wooded Estate Downland
- B4. Angmering and Clapham Wooded Estate Downland
- E1. Lavant Valley
- F2. Ouse Floodplain
- F3. Adur Floodplain
- F4. Arun Floodplain
- G2. Ouse Valley Sides
- G3. Adur Valley Sides
- G4. Arun Valley Sides
- H1. Rother Floodplain
- H2. Arun (Wealden) Floodplain
- I1. Ouse to Eastbourne Downs Scarp
- I2. Adur to Ouse Downs Scarp
- I3. Arun to Adur Downs Scarp
- I4. Buriton to Arun Scarp
- J1. Ouse to Eastbourne Scarp Footslopes
- J2. Adur to Ouse Scarp Footslopes
- J3. Arun to Adur Scarp Footslopes
- K2. East Meon to Bury Greensand Terrace
- L1. Rother Valley Mixed Farmland and Woodland
- M1. Parham Farmland and Heath Mosaic
- M2. Rother Farmland and Heath Mosaic
- N1. Rother Valley Farmland
- O1. Blackdown to Petworth Greensand Hills
- P2. Northchapel Basin
- R1. South Downs Upper Coastal Plain
- S2. Brighton to Rottingdean

East Sussex landscape character

Source: East Sussex Landscape Character Assessment (2016)

- 1. Upper Medway
- 2. Ashdown Forest
- 3. Upper Ouse Valley
- 14. Western Low Weald
- 15. Eastern Low Weald
- 17. Ditchling - Mount Harry Downs
- 18. Falmer - Telscombe Downs
- 19. Lower Ouse Valley
- 21. Firle Bishopstone Downs
- 28. Saldean - Peacehaven
- 34. Newhaven

Hampshire landscape character

Source: Hampshire Integrated Character Assessment (2010)

- S. Settlement

Surrey landscape character

Source: Surrey Landscape Character Assessment (2015)

- RF9. Wey and Arun Canal River Floodplain
- S. Settlement
- WW1. Chiddingfold Wooded Low Weald
- WW2. West Dunsfold Wooded Low Weald
- WW3. Tugley to Sydney Wood Wooded Low Weald
- WW5. Grafham to Dunsfold Wooded Low Weald
- WW6. Dunsfold to Pollingfold Wooded Low Weald
- WW8. Cranleigh to Charlwood Wooded Low Weald

West Sussex landscape character

Source: Landscape Character Assessment of West Sussex (2003)

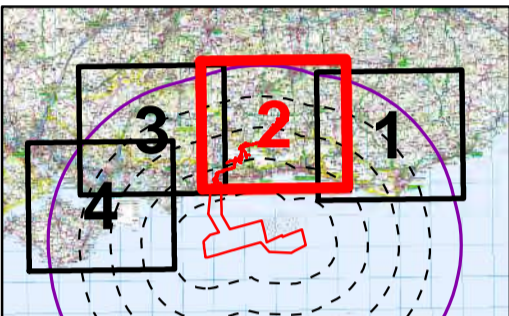
- BuA. Build up Area
- HW1. High Weald
- HW2. High Weald Forests
- HW3. Ouse Valley
- HW4. High Weald Fringes
- LW1. North Western Valleys
- LW10. Eastern Low Weald
- LW11. Eastern Scarp Footslopes
- LW2. North Western Low Weald
- LW3. Upper Arun Valley
- LW4. Low Weald Hills
- LW5. Southern Low Weald
- LW6. Central Low Weald
- LW7. Wiston Low Weald
- LW8. Northern Vales
- LW9. Upper Adur Valley
- SC1. South Coast Shoreline
- SC10. Lower Arun Valley
- SC11. Littlehampton & Worthing Fringes
- SC12. Angmering Upper Coastal Plain
- SC13. Worthing & Adur Fringes
- SC7. Halnaker Upper Coastal Plain
- SC8. Fontwell Upper Coastal Plain
- SC9. Chichester to Yapton Coastal Plain
- SD3. Central Downs
- SD4. Angmering Park
- SD5. Downland Adur Valley
- SD6. Eastern Downs
- WG6. Arun Wildbrooks
- WG7. Storrington Woods & Heaths
- WG8. Central Scarp Footslopes

Contains OS data © Crown copyright and database right (2022).
© Crown Copyright. All rights reserved (2022). Licence number: 010001673. Data derived from RWE data © RWE 2022. Contains information licensed under the Open Government Licence v1.0.

- Key**
- Proposed DCO Order Limits
 - 50km Study Area
 - 10km Radii
 - Viewpoint

Zone of theoretical visibility (blade tip)

- No. of turbines theoretically visible
- 1 - 13
 - 14 - 26
 - 27 - 39
 - 40 - 52
 - 53 - 65
- East Sussex landscape character
 - Surrey landscape character
 - West Sussex landscape character
 - SDNPA landscape character



Viewpoints

- 5 - Newhaven (Castle Hill)
- 6 - Peacehaven
- 7 - Beacon Hill, Rottingdean
- 8 - Brighton sea front promenade
- 9 - Shoreham/AZ59 coastal road
- 10 - Worthing sea front promenade
- 11 - Littlehampton sea front promenade
- 17 - Devil's Dyke
- 18 - Cissbury Ring
- 19 - Highdown Hill
- 20 - Springhead Hill
- 21 - Bignor Hill
- 26 - Low Weald (A24, near Ashington)
- 27 - Hollingbury Golf Course/Hill Fort
- 33 - Arundel Castle
- 40 - Climping Beach
- 41 - Slindon Folly
- 47 - High Weald (near Bolney)
- 51 - Ditchling Beacon
- 52 - Chantry Mount
- 53 - Amberley Mount
- 54 - Chantry Hill
- 55 - Beeding Hill
- 57 - Telscomb Tye
- 58 - Wolstonbury Hill
- 61 - A27 near Lancing College
- C - Eastergate (proposed A29)
- E - Ferring Gap
- F - Lancing Beach

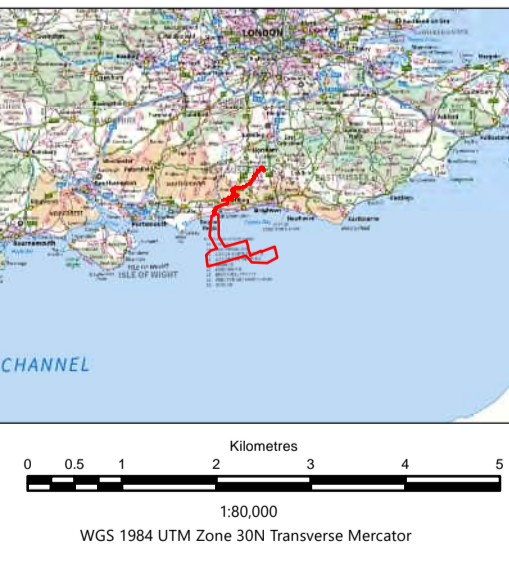


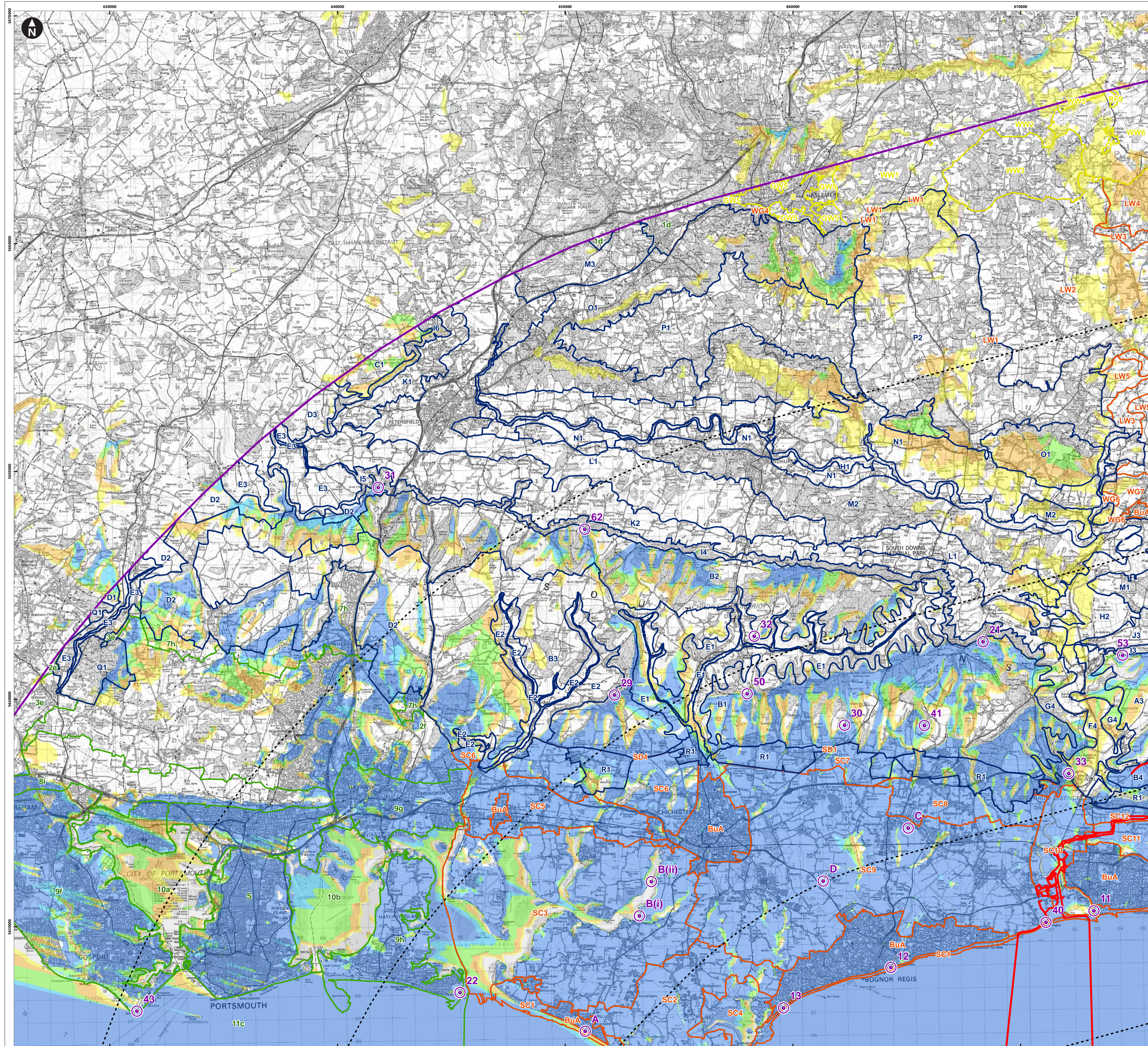
Figure 15.19b Blade tip ZTV with landscape character - Map 2 (Central)

Environmental Statement

Blade Tip:	325m	Observer height:	2m
DTM:	OS T5 & T50	Surface features:	Excluded
DTM resolution:	10m	Earth curvature:	Included

Sea level was modelled at 3.41m below Ordnance datum (equivalent of Lowest astronomical tide for Newhaven)

System identifier:	42285-GOBE-ES-OF-FG-10-3792	Version:	3.0
Company:	OPEN	Drawn By:	WSP
Drawn By:	JM	Drawn Date:	06/06/2023
Chk/Aprvd:	WSP	Status:	FINAL



SDNPA landscape character

- Source: South Downs National Park Integrated Landscape Character Assessment (2010)
- A3. Arun to Adur Open Downs
 - B1. Goodwood to Arundel Wooded Estate Downland
 - B2. Queen Elizabeth Forest to East Dean Wooded Estate Downland
 - B3. Standed to West Dean Wooded Estate Downland
 - B4. Angmering and Clapham Wooded Estate Downland
 - C1. Froxfield Clay Plateau
 - D1. South Winchester Downland Mosaic
 - D2. Hambledon to Clanfield Downland Mosaic
 - D3. Bramdean and Cheriton Downland Mosaic
 - E1. Lavant Valley
 - E2. Emms Valley
 - E3. Meon Valley
 - F4. Arun Floodplain
 - G4. Arun Valley Sides
 - H1. Rother Floodplain
 - H2. Arun (Wealden) Floodplain
 - I3. Arun to Adur Downs Scarp
 - I4. Buriton to Arun Scarp
 - I5. Saltdown to Butser Hill Scarp
 - I6. Selborne Hangers to East Meon Scarp
 - J3. Arun to Adur Scarp Footslopes
 - K1. East Hampshire Greensand Terrace
 - K2. East Meon to Bury Greensand Terrace
 - L1. Rother Valley Mixed Farmland and Woodland
 - M1. Parham Farmland and Heath Mosaic
 - M2. Rother Farmland and Heath Mosaic
 - M3. Woolmer Forest / Weaver's Down
 - N1. Rother Valley Farmland
 - O1. Blackdown to Petworth Greensand Hills
 - P1. Milland Basin
 - P2. Northchapel Basin
 - Q1. West Walk - Rookesbury Park
 - R1. South Downs Upper Coastal Plain

Hampshire landscape character

- Source: Hampshire Integrated Character Assessment (2010)
- 1d. Western Weald Forest and Farmland Heath*
 - 2e. Forest of Bere West
 - 2f. Forest of Bere East
 - 3e. Meon Valley
 - 7h. South East Hampshire Downs
 - 8i. Portsdown Hill Open Downs
 - 9f. Gosport and Fareham Coastal Plain
 - 9g. Havant and Emsworth Coastal Plain
 - 9h. Hayling Island Coastal Plain
 - 10a. Harbours
 - 10b. Langstone and Chichester Harbours
 - 11c. Eastern Solent

Surrey landscape character

- Source: Surrey Landscape Character Assessment (2015)
- GW5. Hindhead Wooded Greensand Hills
 - RF9. Wey and Arun Canal River Floodplain
 - S. Settlement
 - WW1. Chiddingfold Wooded Low Weald
 - WW2. West Dunsfold Wooded Low Weald
 - WW3. Tugley to Sydney Wood Wooded Low Weald
 - WW5. Grafton to Dunsfold Wooded Low Weald
 - WW6. Dunsfold to Pollingfold Wooded Low Weald

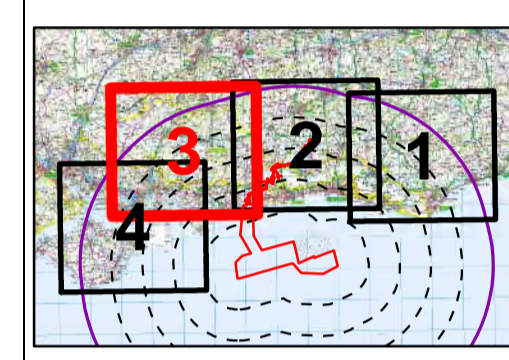
West Sussex landscape character

- Source: Landscape Character Assessment of West Sussex (2003)
- BuA. Build up Area
 - LW1. North Western Valleys
 - LW2. North Western Low Weald
 - LW3. Upper Arun Valley
 - LW4. Low Weald Hills
 - LW5. Southern Low Weald
 - SC1. South Coast Shoreline
 - SC10. Lower Arun Valley
 - SC11. Littlehampton & Worthing Fringes
 - SC12. Angmering Upper Coastal Plain
 - SC2. Manhood Peninsula
 - SC3. Chichester Harbour
 - SC4. Pagham Harbour
 - SC5. Southbourne Coastal Plain
 - SC6. Ashlings Upper Coastal Plain
 - SC7. Halnaker Upper Coastal Plain
 - SC8. Fortwell Upper Coastal Plain
 - SC9. Chichester to Yapton Coastal Plain
 - SD1. Western Downs
 - WG4. North Western Ridges
 - WG6. Arun Wildbrooks
 - WG7. Storrington Woods & Heaths

Contains OS data © Crown copyright and database right (2022).
© Crown Copyright. All rights reserved (2022). Licence number 0100031673. Data derived from RWE data © RWE 2022. Contains information licensed under the Open Government Licence v3.0.

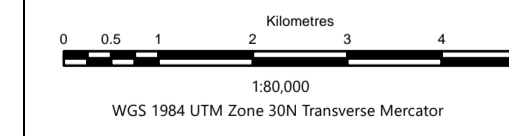
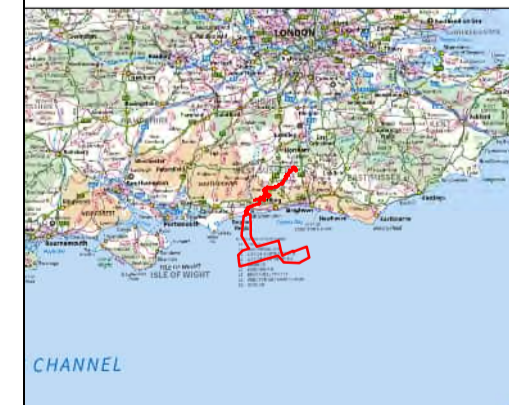
- Key**
- Proposed DCO Order Limits
 - 50km Study Area
 - 10km Radii
 - Viewpoint

- Zone of theoretical visibility (blade tip)**
- No. of turbines theoretically visible**
- 1 - 13
 - 14 - 26
 - 27 - 39
 - 40 - 52
 - 53 - 65
- Hampshire landscape character**
- Surrey landscape character**
- West Sussex landscape character**
- SDNPA landscape character**



Viewpoints

- 11 - Littlehampton sea front promenade
- 12 - Bognor Regis sea front promenade
- 13 - Pagham Beach
- 21 - Bignor Hill
- 22 - Eastoke Point (Chichester Harbour AONB)
- 29 - Kingley Vale National Nature Reserve
- 30 - Halnaker Windmill, north of Chichester
- 31 - Butser Hill National Nature Reserve
- 32 - Levin Down
- 33 - Arundel Castle
- 40 - Climping Beach
- 41 - Slindon Folly
- 43 - Glickicker Point
- 50 - The Trundle
- 53 - Amberley Mount
- 62 - Beacon Hill, South Downs Way
- A - East Wittering
- B(i) - Chichester Marina
- B(ii) - Dell Quay
- C - Eastergate (proposed A259)
- D - Footpath between A259 and Colworth



Rampton 2 Offshore Wind Farm

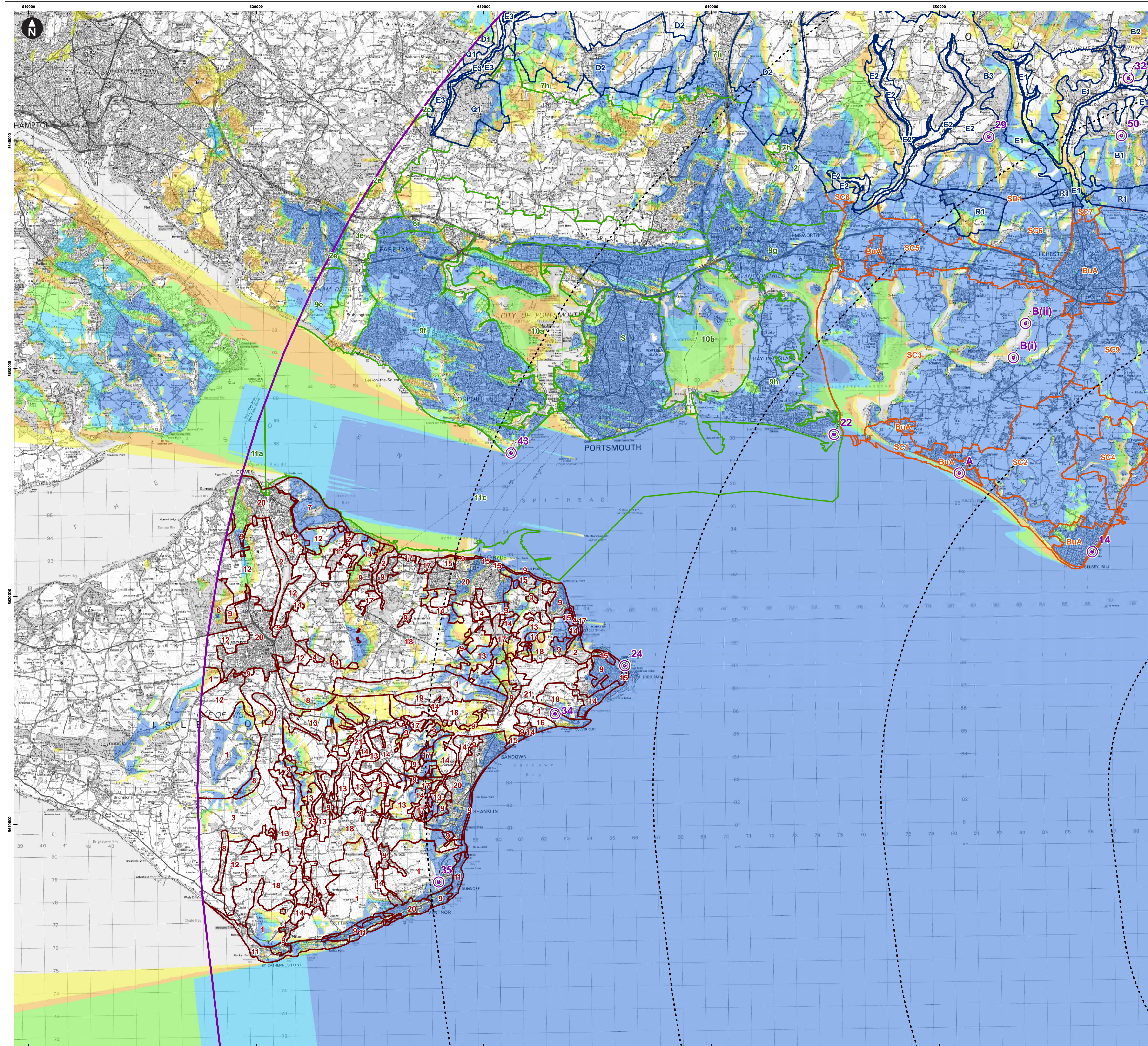
Figure 15.19c Blade tip ZTV with landscape character - Map 3 (West)

Environmental Statement

Blade Tip:	325m	Observer height:	2m
DTM:	OS T5 & T50	Surface features:	Excluded
DTM resolution:	10m	Earth curvature:	Included

Sea level was modelled at 3.41m below Ordnance datum (equivalent of Lowest astronomical tide for Newhaven)

System identifier:	42285-GOBE-ES-OF-FG-10-3792	Version:	3.0
Company:	OPEN	Drawn By:	JM
Checked/Approved:	WSP	Drawn Date:	06/06/2023
Status:	FINAL		



SDNPA landscape character

Source: South Downs National Park Integrated Landscape Character Assessment (2020)

- B1. Goodwood to Arundel Wooded Estate Downland
- B2. Queen Elizabeth Forest to East Dean Wooded Estate Downland
- B3. Stansted to West Dean Wooded Estate Downland
- D1. South Winchester Downland Mosaic
- D2. Hambledon to Clanfield Downland Mosaic
- E1. Lavant Valley
- E2. Emms Valley
- E3. Meon Valley
- Q1. West Walk - Rookesbury Park
- R1. South Downs Upper Coastal Plain

Hampshire landscape character

Source: Hampshire Integrated Character Assessment (2010)

- 2e. Forest of Bere West
- 2f. Forest of Bere East
- 3e. Meon Valley
- 7h. South East Hampshire Downs
- 8f. Portsdown Hill Open Downs
- 9e. Chilling Brownwich and Locks Heath Coastal Plain
- 9f. Gosport and Fareham Coastal Plain
- 9g. Havant and Emsworth Coastal Plain
- 9h. Hayling Island Coastal Plain
- 10a. Harbours
- 10b. Langstone and Chichester Harbours
- 11a. Western Solent
- 11c. Eastern Solent
- S. Settlement

Isle of Wight landscape character

Source: East Wight Landscape Character Assessment (2015)

- 1. Chalk Downs
- 2. Harbours and Creeks
- 3. Intensive Agricultural Land
- 4. Landscape Improvement Area
- 6. Northern Woodlands
- 7. Osborne Coast
- 8. Sandstone Hills & Gravel Ridges
- 9. Settlement
- 11. The Undercliff
- 12. Traditional Enclosed Pasture Land
- 13. Arable Farmland
- 14. Changed Countryside
- 15. Coastal Designed Landscape
- 16. Coastal Farmland
- 17. East Wight Woodlands
- 18. Pasture Land
- 19. Sandstone Hills
- 20. Urban
- 21. Valley Floor

West Sussex landscape character

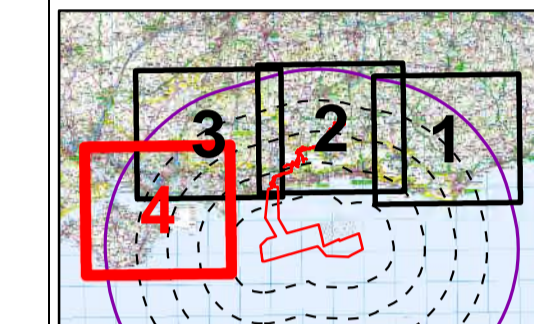
Source: Landscape Character Assessment of West Sussex (2003)

- BuA. Build up Area
- SC1. South Coast Shoreline
- SC2. Manhood Peninsula
- SC3. Chichester Harbour
- SC4. Pagham Harbour
- SC5. Southbourne Coastal Plain
- SC6. Ashlings Upper Coastal Plain
- SC7. Hainaker Upper Coastal Plain
- SC9. Chichester to Yapton Coastal Plain
- SD1. Western Downs

Contains OS data © Crown copyright and database right (2022).
© Crown Copyright. All rights reserved (2022). Licence number 010001673. Data derived from RWE data © RWE 2022. Contains information licensed under the Open Government Licence v3.0.

Key

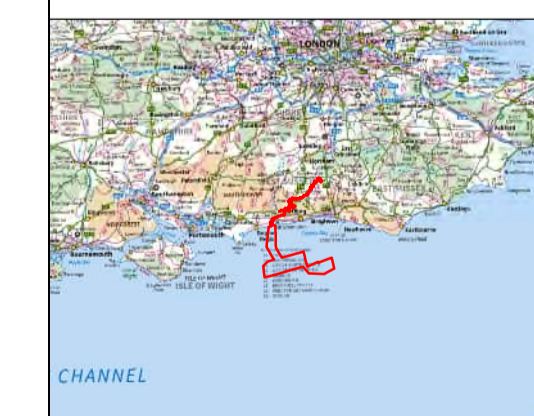
- Proposed DCO Order Limits
 - 50km Study Area
 - 10km Radii
 - Viewpoint
- Zone of theoretical visibility (blade tip)
- No. of turbines theoretically visible
- 1 - 13
 - 14 - 26
 - 27 - 39
 - 40 - 52
 - 53 - 65
- Hampshire landscape character
 - Isle of Wight landscape character
 - West Sussex landscape character
 - SDNPA landscape character



- Viewpoints**
- 14 - Selsey sea front promenade
 - 22 - Eastoke Point (Chichester Harbour AONB)
 - 24 - Bembridge, Isle of Wight
 - 29 - Kingley Vale National Nature Reserve
 - 32 - Levin Down
 - 34 - Bembridge Fort
 - 35 - St. Boniface Down above Ventnor
 - 43 - Gilkicker Point
 - 50 - The Trundle
 - A - East Wittering
 - B(i) - Chichester Marina
 - B(ii) - Dell Quay

Blade Tip:	325m	Observer height:	2m
DTM:	OS T5 & T50	Surface features:	Excluded
DTM resolution:	10m	Earth curvature:	Included

Sea level was modelled at 3.41m below Ordnance datum (equivalent of Lowest astronomical tide for Newhaven)



WGS 1984 UTM Zone 30N Transverse Mercator
1:80,000

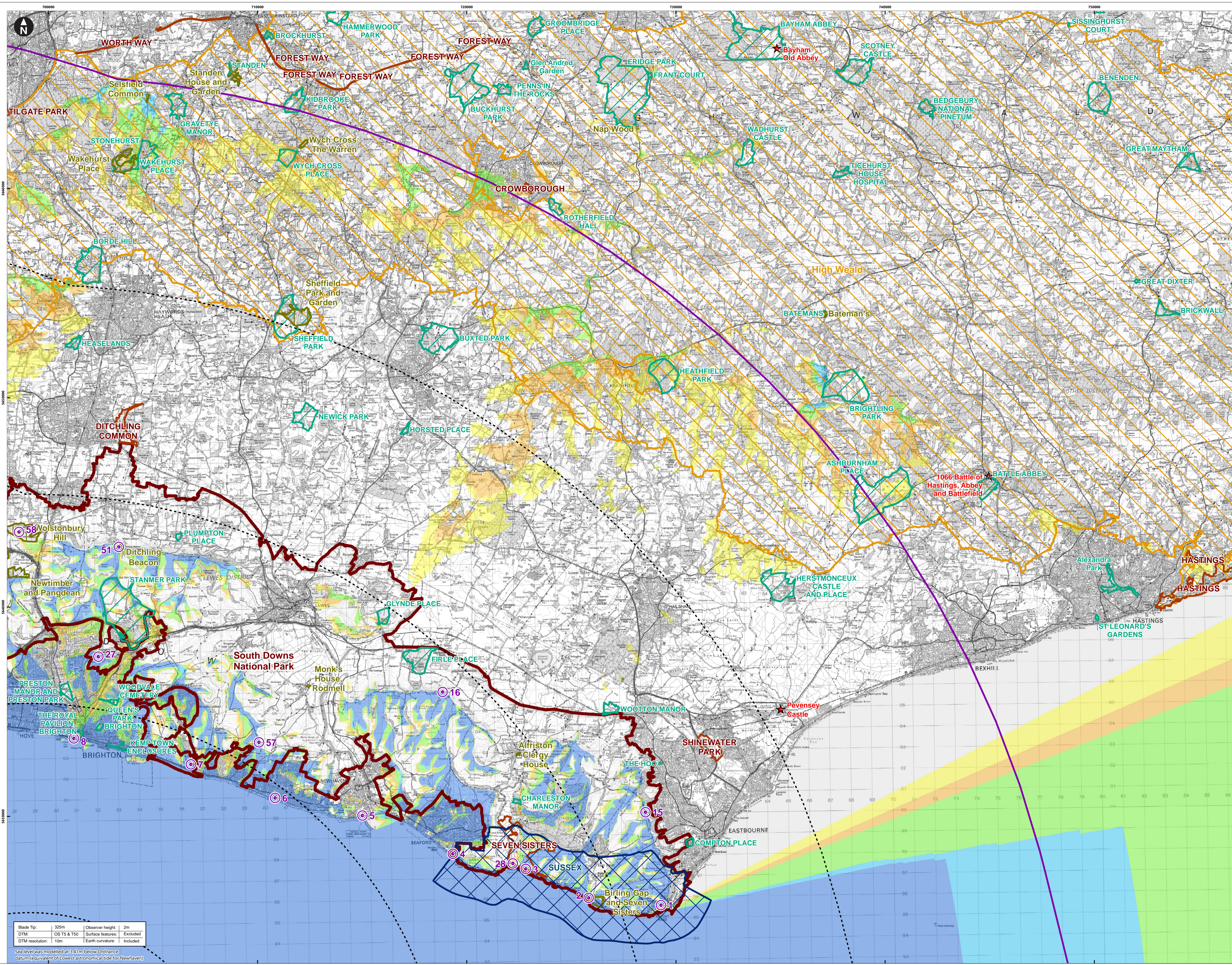


Ramplion 2 Offshore Wind Farm

Figure 15.19d Blade tip ZTV with landscape character - Map 4 (Isle of Wight)

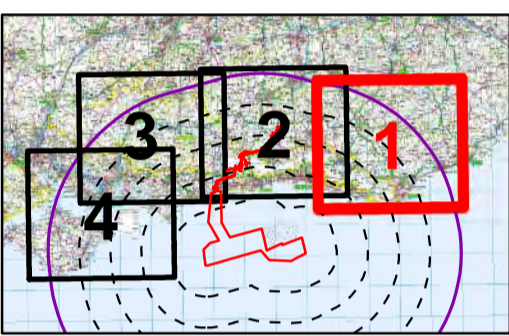
Environmental Statement

System Identifier:	42285-GOBE-ES-OF-FG-10-3792	Version:	3.0
Company:	OPEN	Drawn By:	JM
Chk/Aprvd:	WSP	Drawn Date:	06/06/2023
Status:	FINAL		

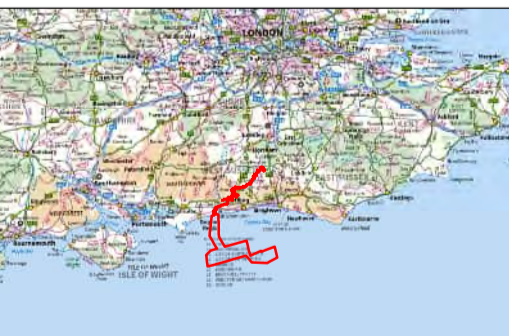


Contains OS data © Crown copyright and database right (2022).
 © Crown Copyright. All rights reserved (2022). Licence number 010001673. Data derived from RWE data © RWE 2022. Contains information licensed under the Open Government Licence v3.0.

- Key**
- Proposed DCO Order Limits
 - 50km Study Area
 - 10km Radii
 - Viewpoint
 - ★ English Heritage site
 - National Trust site
 - Country Park
 - Registered Parks and Garden
 - Area of Outstanding Natural Beauty
 - Heritage Coasts
 - National Park
- Zone of theoretical visibility (blade tip)
- No. of turbines theoretically visible
- 1 - 13
 - 14 - 26
 - 27 - 39
 - 40 - 52
 - 53 - 65



- Viewpoints**
- 1 - Beachy Head
 - 2 - Birling Gap
 - 3 - Seven Sisters Country Park
 - 4 - Seaford Head
 - 5 - Newhaven (Castle Hill)
 - 6 - Peacehaven
 - 7 - Beacon Hill, Rottingdean
 - 8 - Brighton sea front promenade
 - 15 - Willingdon Hill
 - 16 - Firle Beacon
 - 27 - Hollingbury Golf Course/Hill Fort
 - 28 - Cuckmere Haven Beach
 - 51 - Ditchling Beacon
 - 57 - Telscomb Tye
 - 58 - Wolstonbury Hill



0 0.5 1 1.5 2 Kilometers

1:80,000

WGS 1984 UTM Zone 30N Transverse Mercator

Ramption Extension Development

Ramption 2 Offshore Wind Farm

Figure 15.20a Blade tip ZTV with landscape designation - Map 1 (East)

Environmental Statement

Blade Tip:	325m	Observer height:	2m
DTM:	OS T5 & T50	Surface features:	Excluded
DTM resolution:	10m	Earth curvature:	Included

Sea level was modelled at 3.41m below Ordnance datum (equivalent of Lowest Astronomical Tide for Newhaven)

System Identifier: 42285-GOBE-ES-OF-FG-10-6746

Company: OPEN

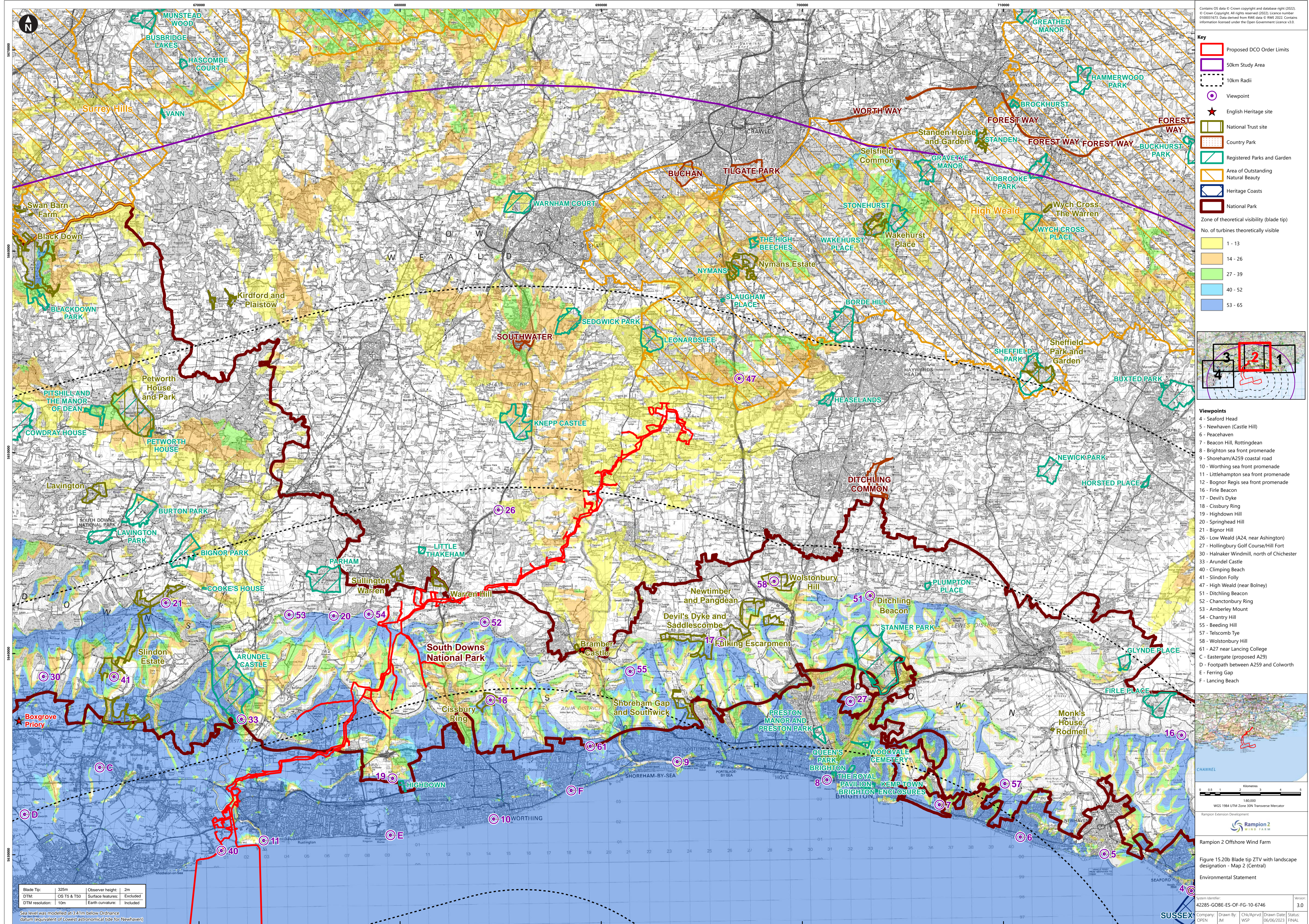
Drawn By: JM

Chk/Approved: WSP

Drawn Date: 06/06/2023

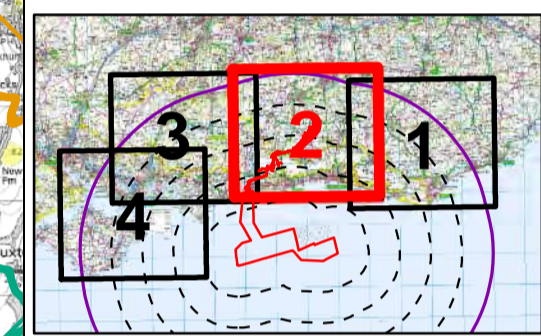
Status: FINAL

Version: 3.0

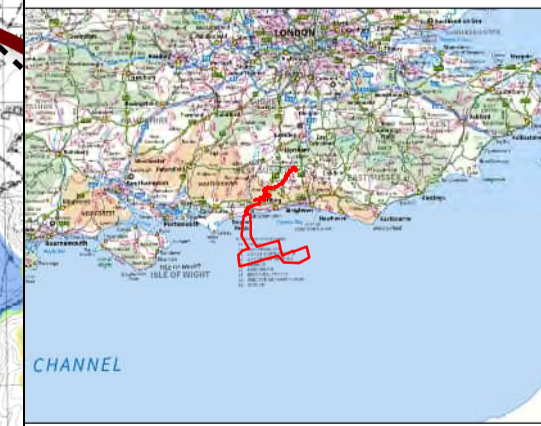


Contains OS data © Crown copyright and database right (2022).
 © Crown Copyright. All rights reserved (2022). Licence number: 0100031673. Data derived from RWE data © RWE 2022. Contains information licensed under the Open Government Licence v3.0.

- Key**
- Proposed DCO Order Limits
 - 50km Study Area
 - 10km Radii
 - Viewpoint
 - ★ English Heritage site
 - National Trust site
 - Country Park
 - Registered Parks and Garden
 - Area of Outstanding Natural Beauty
 - Heritage Coasts
 - National Park
- Zone of theoretical visibility (blade tip)
- No. of turbines theoretically visible
- 1 - 13
 - 14 - 26
 - 27 - 39
 - 40 - 52
 - 53 - 65



- Viewpoints**
- 4 - Seaford Head
 - 5 - Newhaven (Castle Hill)
 - 6 - Peacehaven
 - 7 - Beacon Hill, Rottingdean
 - 8 - Brighton sea front promenade
 - 9 - Shoreham/A259 coastal road
 - 10 - Worthing sea front promenade
 - 11 - Littlehampton sea front promenade
 - 12 - Bognor Regis sea front promenade
 - 16 - Firle Beacon
 - 17 - Devil's Dyke
 - 18 - Cissbury Ring
 - 19 - Highdown Hill
 - 20 - Springhead Hill
 - 21 - Bignor Hill
 - 26 - Low Weald (A24, near Ashington)
 - 27 - Hollingbury Golf Course/Hill Fort
 - 30 - Halnaker Windmill, north of Chichester
 - 33 - Arundel Castle
 - 40 - Climping Beach
 - 41 - Slindon Folly
 - 47 - High Weald (near Boley)
 - 51 - Ditchling Beacon
 - 52 - Chanctonbury Ring
 - 53 - Amberley Mount
 - 54 - Chantry Hill
 - 55 - Beeding Hill
 - 57 - Telscomb Tye
 - 58 - Wolstonbury Hill
 - 61 - A27 near Lancing College
 - C - Eastergate (proposed A29)
 - D - Footpath between A259 and Colworth
 - E - Ferring Gap
 - F - Lancing Beach



Rampion 2 Offshore Wind Farm

Figure 15.20b Blade tip ZTV with landscape designation - Map 2 (Central)

Environmental Statement

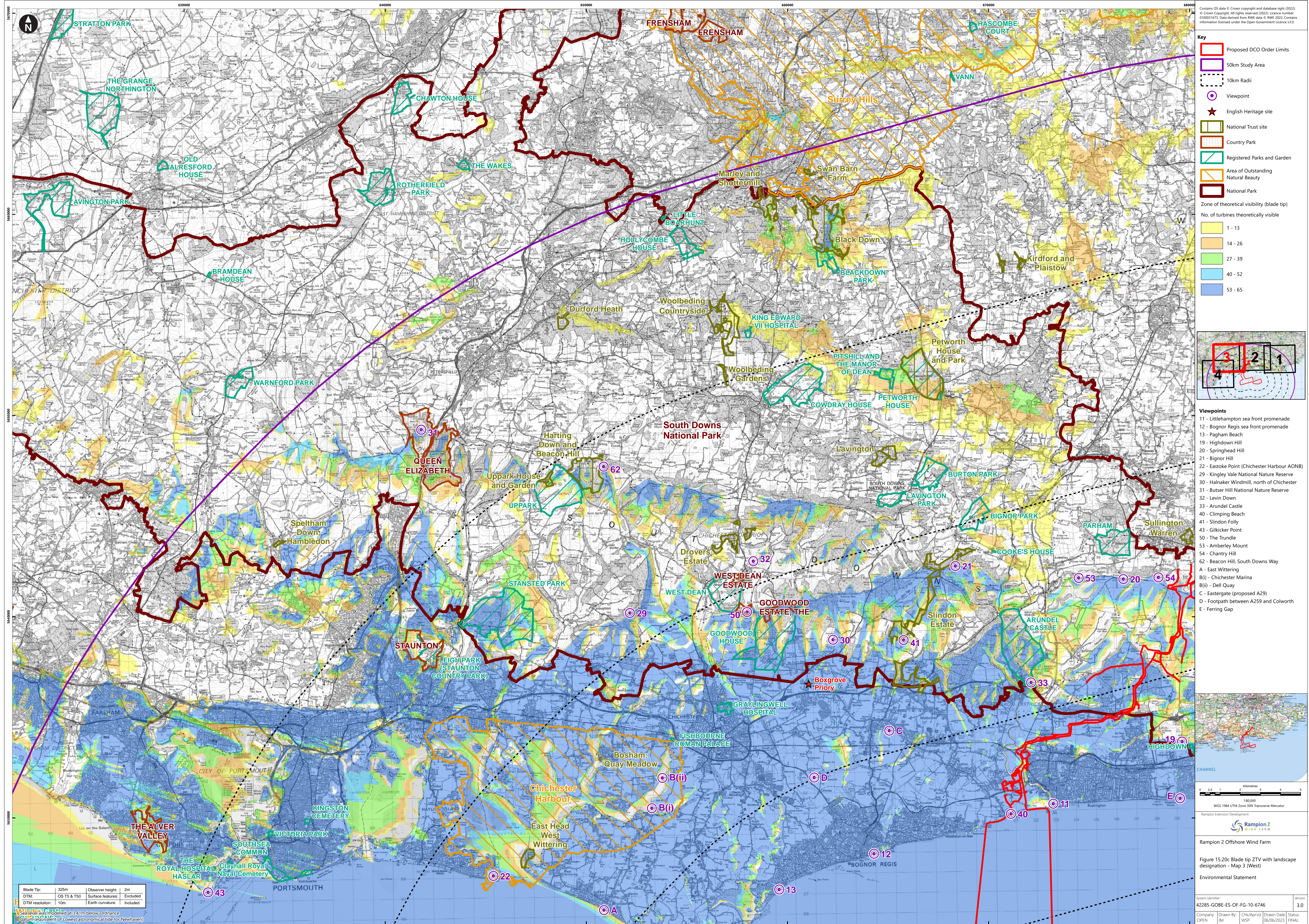
System Identifier: 42285-GOBE-ES-OF-FG-10-6746 | Version: 3.0

Company: OPEN | Drawn By: WSP | Drawn Date: 06/06/2023 | Status: FINAL

SUSSEX

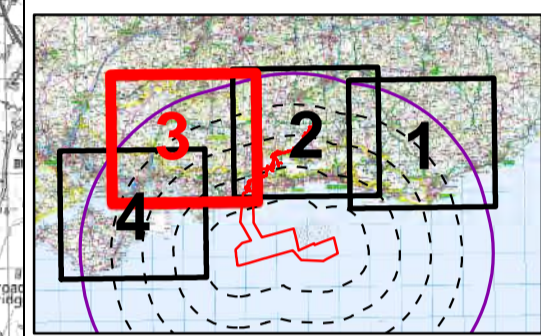
Blade Tip: 325m | Observer height: 2m
 DTM: OS T5 & T50 | Surface features: Excluded
 DTM resolution: 10m | Earth curvature: Included

Sea level was modelled at 3.41m below Ordnance datum (equivalent of Lowest Astronomical Tide for Newhaven)

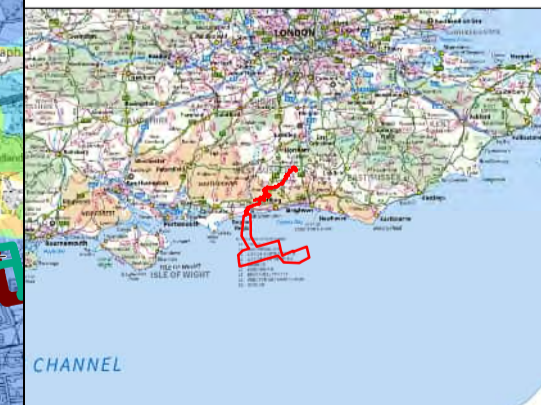


Contains OS data © Crown copyright and database right (2022).
 © Crown Copyright. All rights reserved (2022). Licence number 0100031673. Data derived from RWE data © RWE 2022. Contains information licensed under the Open Government Licence v3.0.

- Key**
- Proposed DCO Order Limits
 - 50km Study Area
 - 10km Radii
 - Viewpoint
 - ★ English Heritage site
 - National Trust site
 - Country Park
 - Registered Parks and Garden
 - Area of Outstanding Natural Beauty
 - National Park
- Zone of theoretical visibility (blade tip)**
- No. of turbines theoretically visible
- 1 - 13
 - 14 - 26
 - 27 - 39
 - 40 - 52
 - 53 - 65



- Viewpoints**
- 11 - Littlehampton sea front promenade
 - 12 - Bognor Regis sea front promenade
 - 13 - Pagham Beach
 - 19 - Highdown Hill
 - 20 - Springhead Hill
 - 21 - Bignor Hill
 - 22 - Eastoke Point (Chichester Harbour AONB)
 - 29 - Kingley Vale National Nature Reserve
 - 30 - Halnaker Windmill, north of Chichester
 - 31 - Butser Hill National Nature Reserve
 - 32 - Levin Down
 - 33 - Arundel Castle
 - 40 - Climping Beach
 - 41 - Slindon Folly
 - 43 - Gilkicker Point
 - 50 - The Trundle
 - 53 - Amberley Mount
 - 54 - Chantry Hill
 - 62 - Beacon Hill, South Downs Way
 - A - East Wittering
 - B(i) - Chichester Marina
 - B(ii) - Dell Quay
 - C - Eastergate (proposed A29)
 - D - Footpath between A259 and Colworth
 - E - Ferring Gap



Rampton 2 Offshore Wind Farm

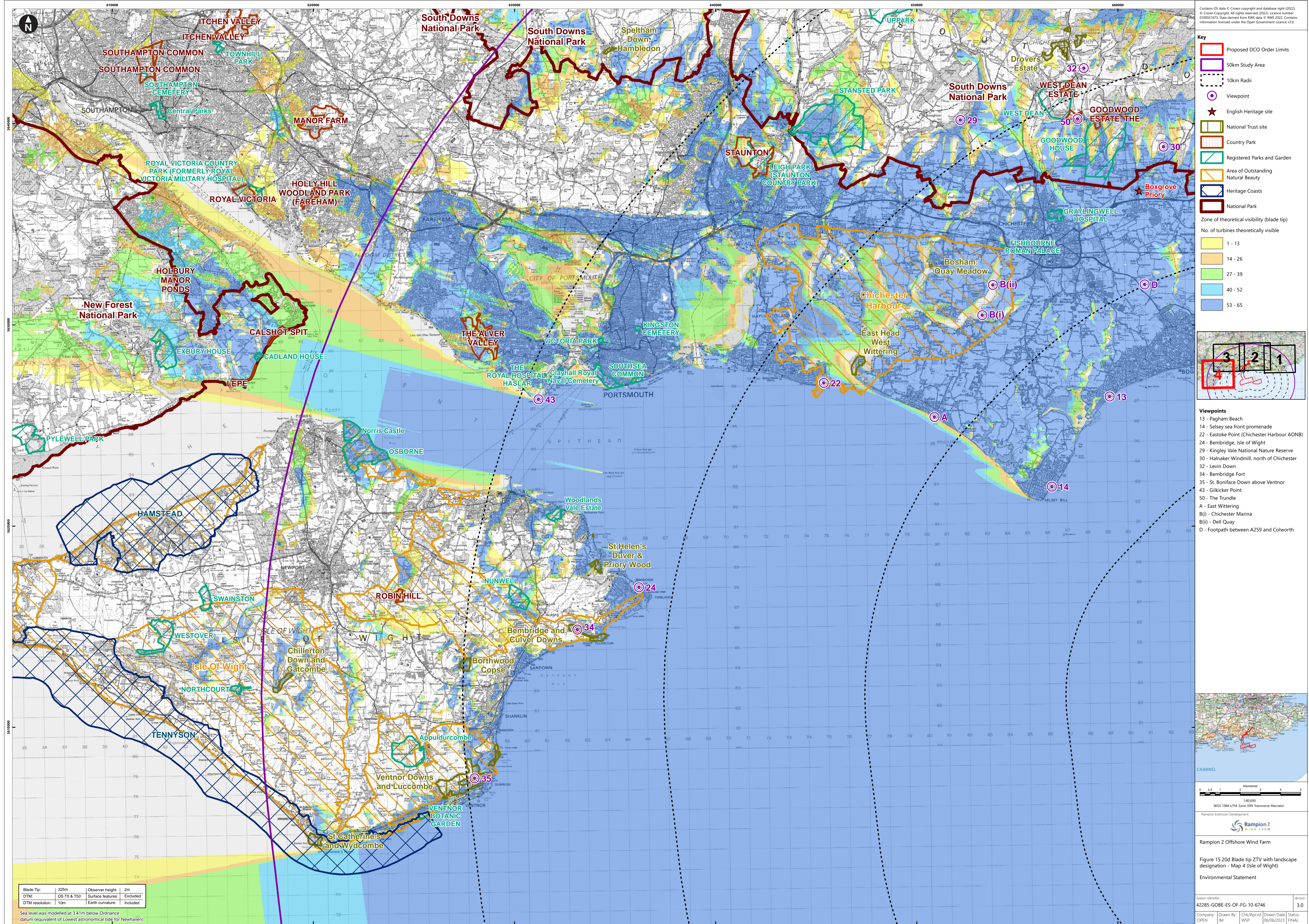
Figure 15.20c Blade tip ZTV with landscape designation - Map 3 (West)

Environmental Statement

System identifier: 42285-GOBE-ES-OF-FG-10-6746	Version: 3.0
Company: JM	Drawn By: WSP
Checked By: WSP	Drawn Date: 06/06/2023
Status: FINAL	

Document uncontrolled when printed

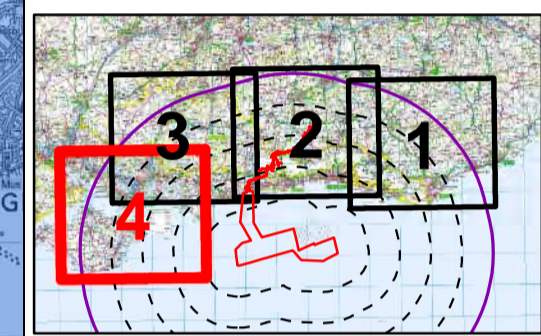
Blade Tip: 1325m Observer height: 2m
 DTM: OS T5 & T50 Surface features: Excluded
 DTM resolution: 10m Earth curvature: Included
 Sea level was modelled at 3.41m below Ordnance
 Datum (equivalent of Lowest Astronomical Tide for Newhaven)



Contains OS data © Crown copyright and database right (2022).
 © Crown Copyright. All rights reserved (2022). Licence number 0100031673. Data derived from RWE data © RWE 2022. Contains information licensed under the Open Government Licence v3.0.

- Key**
- Proposed DCO Order Limits
 - 50km Study Area
 - 10km Radii
 - ⊙ Viewpoint
 - ★ English Heritage site
 - National Trust site
 - Country Park
 - Registered Parks and Garden
 - Area of Outstanding Natural Beauty
 - Heritage Coasts
 - National Park

- Zone of theoretical visibility (blade tip)
- No. of turbines theoretically visible
- 1 - 13
 - 14 - 26
 - 27 - 39
 - 40 - 52
 - 53 - 65



- Viewpoints**
- 13 - Pagham Beach
 - 14 - Selsey sea front promenade
 - 22 - Eastoke Point (Chichester Harbour AONB)
 - 24 - Bembridge, Isle of Wight
 - 29 - Kingley Vale National Nature Reserve
 - 30 - Halnaker Windmill, north of Chichester
 - 32 - Levin Down
 - 34 - Bembridge Fort
 - 35 - St. Boniface Down above Ventnor
 - 43 - Gilkicker Point
 - 50 - The Trundle
 - A - East Wittering
 - B(i) - Chichester Marina
 - B(ii) - Dell Quay
 - D - Footpath between A259 and Colworth

Blade Tip: 325m | Observer height: 2m
 DTM: OS T5 & T50 | Surface features: Excluded
 DTM resolution: 10m | Earth curvature: Included

Sea level was modelled at 3.41m below Ordnance datum (equivalent of Lowest astronomical Tide for Newhaven)

0 1 2 3 4 Kilometres
 1:80,000
 WGS 1984 UTM Zone 30N Transverse Mercator

Rampion 2 Wind Farm
 Rampion 2 Offshore Wind Farm
 Figure 15.20d Blade tip ZTV with landscape designation - Map 4 (Isle of Wight)
 Environmental Statement

System Identifier: 42285-GOBE-ES-OF-FG-10-6746 | Version: 3.0
 Company: OPEN | Drawn By: JIM | Chk/Prv'd: WSP | Drawn Date: 06/06/2023 | Status: FINAL

Document uncontrolled when printed | ISO A1 Landscape